

# Applying to Family Fund



**Family Fund**

Helping disabled children

[www.familyfund.org.uk](http://www.familyfund.org.uk)

# Applying to Family Fund

We have a short film on our website called 'Should I apply?' that may be useful to watch before you fill out your application [www.familyfund.org.uk/canweapply](http://www.familyfund.org.uk/canweapply)

We help families across the UK who are raising a disabled or seriously ill child or young person aged 17 or under who have:

- ✓ A high level of additional support needs arising from a long term disability or disabling condition. By long term we mean lasting or likely to last 12 months or more.
- ✓ A serious or life limiting illness.

Family Fund uses its own child and young person's eligibility criteria to assess a disabled or seriously ill child or young person's additional support needs based on a social model of disability. We have identified seven areas where disabled children and young people face additional obstacles and need extra support. By a high level we mean significant additional support is given compared to a child or young person of the same age.

**Please read our child and young person's eligibility criteria: [www.familyfund.org.uk/eligibility](http://www.familyfund.org.uk/eligibility).**

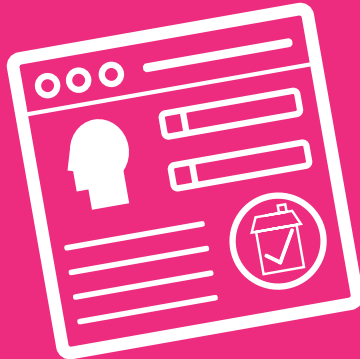
**You can get help completing the application form through health or medical professionals or a local charity. Contact your support worker for more information.**



# About you

We need your name, address and contact details so we can contact you about your application and prevent delays.

Name	<input checked="" type="checkbox"/>
Address	<input checked="" type="checkbox"/>
Contact details	<input checked="" type="checkbox"/>



Page 1.



# Your application

## Does your child live with you on a full time permanent basis?

If you have parental and financial responsibility for your child, we can consider an application. This includes if your child is attending a residential school or is an inpatient in a hospital or a unit.

If you have a Child Arrangement Order (England and Wales) or a Contact Order (Scotland or Northern Ireland) with another carer, we can only accept applications from the main carer (who the child lives with the majority of the time). We need to see a copy of any documents to confirm this.



Page 2.



## Is your child the subject of a Local Authority care order?

Please tell us the type of care order in place and send copies of this with your application form. We may contact you for more information about these arrangements.

We don't need to know about the medical, educational or therapeutic support your child receives here as this is covered in the 'Child or young person's details' section of the form.

## Is your child in foster care?

If your child does not live with you or if you are fostering a child, we are unable to help as the Local Authority is financially responsible.

## Residency

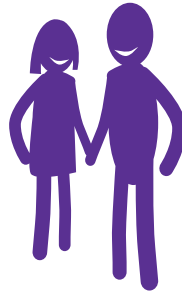
If you are not a British or EU citizen, we need to see documentation showing your current residency status, please send copies of this with your application form. We may contact you for more information about these arrangements.

Page 2.



# Your partner

To prevent any delays in considering your application, please give us the name and contact details of your partner, this is the person who lives with you and your child or children.

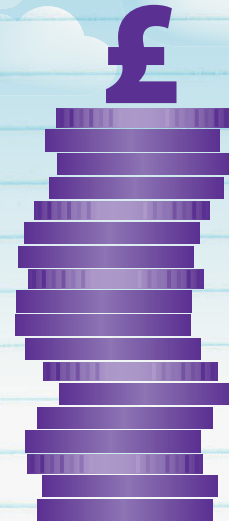


We cannot speak to your partner about this application if they are not named here.

# Your household income

It will delay your application if you do not send a photocopy of information about your tax credits or benefits.

If you do not receive any of the benefits listed on the application please tick the bottom box. We will then contact you for further information and confirmation of your household income.





# Child or young person's details

To consider if your child may meet our **child and young person's eligibility criteria** we need to know about the high level of additional support your child is given compared to a child of the same age.

Complete all sections telling us as much as possible as incomplete or limited information may result in your application being declined.



Pages 4-6.



If there is anything else you wish to tell us about your child please feel free to provide this on a separate sheet or through recent reports from any professionals who work closely with them.

**Remember to only send copies.**

We can help with one application per family, every 12 months. If you want to apply for more than one child please download a **Child details form** from our website ([www.familyfund.org.uk/howtoapply](http://www.familyfund.org.uk/howtoapply)), or contact us and we can send one to you: [www.familyfund.org.uk/contactus](http://www.familyfund.org.uk/contactus) or 01904 550055.

# Child or young person's details

## Treatment or therapy

Please tell us how often your child receives treatment or therapy. Is this regular and ongoing or part of an assessment?

## Behaviours at home, school and out and about

Tell us the support your child needs with personal care during the day and at night and the supervision needed.

Support to take part in social and leisure activities could mean both the physical and emotional support given.





# Education

Please tell us what support your child needs to access education and how this is provided.

# Communication

Tell us about the support required with listening, speaking and understanding.

# Who can we speak to?

It is helpful if you provide details of someone we can speak to such as a health or medical professional, SENCO, advocate or teacher who knows your child well. Providing this information may prevent delays when considering your application.

When you provide someone's details, please let them know you are making an application to us and that you have given us their details.

Page 6.

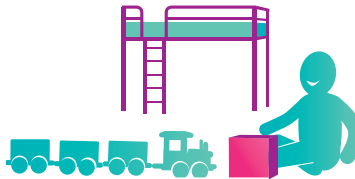


Please do not provide details of GPs or Consultants.



# Your grant

We want you to give us as much detail as you can on your requests, including who this is for and how this relates to the additional needs or wellbeing of your child.



Page 7.



There are certain items we cannot help with which includes anything where a statutory agency such as Health, Education and Social Services has a responsibility to provide.

For example, for support with school transport, specialist buggy or a wheelchair, you would need to speak to your physiotherapist, occupational therapist or other professional about this.

# Your agreement

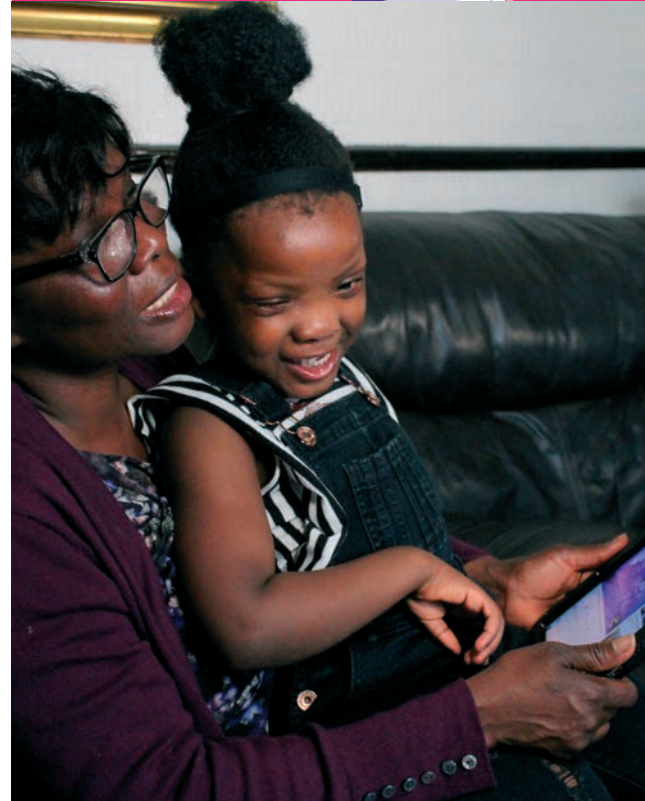
Please read this section carefully then sign and date.  
**We cannot accept applications that have not been signed.**

Before you send this application, please check that you have:

- Included a photocopy of your benefit award letter or bank statement
- Included a photocopy of any DLA/PIP award if your child has one
- Answered all questions as fully as possible
- Signed the form.

If you need any help or need to find out more information about who we help, what we help with and how we help, please visit our website [www.familyfund.org.uk](http://www.familyfund.org.uk).

Page 8.





# Family Fund

Helping disabled children



## Contact us

### find us:

Family Fund, 4 Alpha Court  
Monks Cross Drive  
Huntington  
York YO32 9WN.

### talk to us:

Telephone: **01904 550055**  
Fax: 01904 652625  
Email: **info@familyfund.org.uk**

### community:

 [www.facebook.com/familyfund](http://www.facebook.com/familyfund)

 [@familyfund](https://twitter.com/familyfund)

 [family\\_fund](https://www.instagram.com/family_fund)

[www.familyfund.org.uk](http://www.familyfund.org.uk)